



IMAGE FOR ILLUSTRATION PURPOSES ONLY

HOBBY HUT

Hip Roof

Overview

With a flexible floor plan that offers multiple layout options, the HOBBY HUT can be adapted to suit your needs in a Back Yard Shack. Big enough to be a home away from home but small enough to fit into your back yard and with a choice of roofing options, the HOBBY HUT could be your escape oasis when you need to getaway.

What Backyard Shacks Supply with your Shack

- Complete building kit to lockup stage using 100% BlueScope materials, including frame, cladding, roofing, external doors, windows, roof & wall insulation.
- An internal Bill of Materials will be supplied listing the required components to fit out your shack. Total m2 of plasterboard, lineal meterage of skirting boards, architraves, cornice etc. will be listed, so you can cost and source the internal fit out.
- Delivery to your site.
- Full engineering plans for frames, roof, sub floor or slab for region C2 and N3 wind code areas.
- Full architectural elevations ready for submission to council.
- Indicative electrical and plumbing plans for DIY.
- Engineering plans for soil classifications A&S, M & MD.



x1



x1



x1

Living Space: 51.15m²

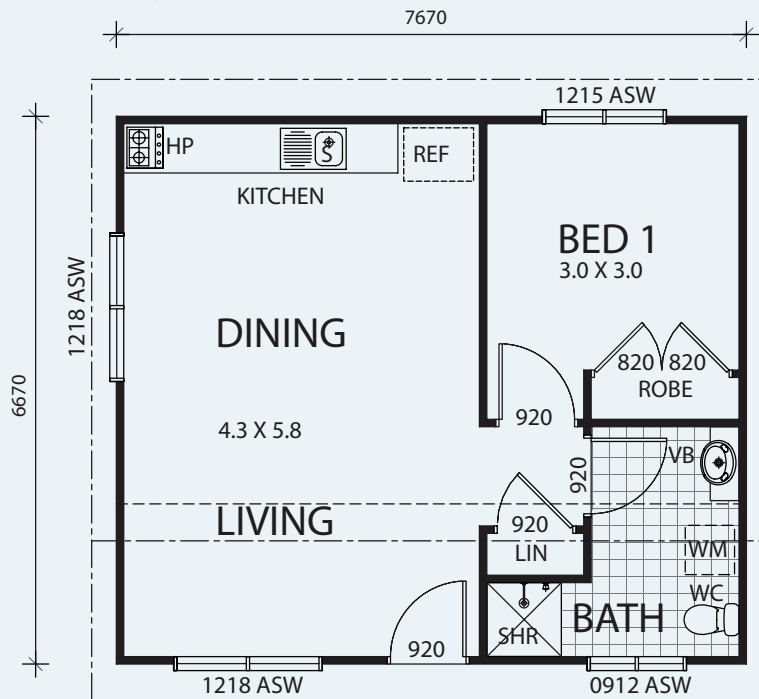
Total Area: 51.15m²

Note: internal fixtures, internal doors, plasterboard, kitchens, bathrooms, laundries etc. are not included. The only internal inclusions will be the bare internal stud frame walls, and ceiling battens.



ENQUIRIES: 1300 726 284
www.backyardshacks.com.au

HOBBY HUT



AREAS (HOBBY HUT):
TOTAL AREA: 51.15m²

FLOOR PLAN

Things You'll Need

- **Site Plan** – A site plan is required for a building application submission to council.
- **Soil Test** – For soil classifications other than above, consult a local engineer to provide RC Slab/Footing engineering to suit your site.
- **House Energy Rating Report** – The BCA (Building Code of Australia) now require a house energy rating report from your respective state. QLD, VIC, TAS, SA, NT & WA all use measures adopted from the BCA regulations, with the exception of NSW. NSW operates its own Building Sustainability Index or BASIX.
- **Local Building Certifier or Council Certifier** – Home-owners are responsible for appointing a Licensed Building Certifier (Building Surveyor) or council certifier.
- **A plumbing and Electrical Certifier** – to ensure the plumbing drainage and electrical plans comply with prescribed standards. Certifiers must be licensed.
- **Possible DA (Development Approval) from Local Council** – You may need to submit a DA to the Local Planning and Land Authority or Council for approval.
- **Mandatory BA (Building Approval)** – A BA application must be lodged with the permit authority or local council.



Double Skillion Roof



Skillion Roof



ENQUIRIES: 1300 726 284
www.backyardshacks.com.au